

# CHIPSEN

공 차	
0,000	
0,00	± 0,05
0,0	± 0,10
0,	±
ANGLE (각도)	±1°

모델명  
DC-2-2

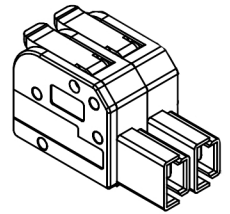
단위  
비율

mm  
1:1

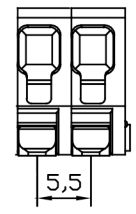
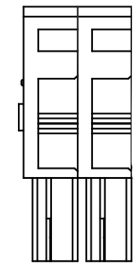
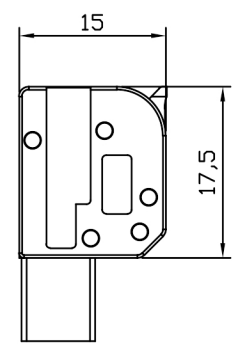
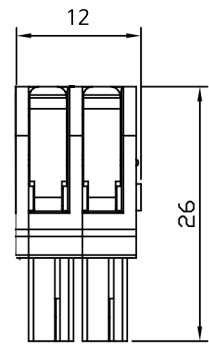
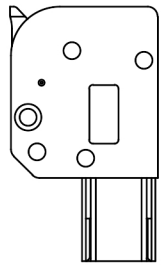
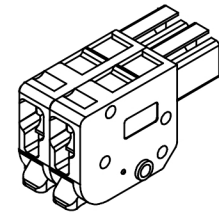
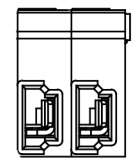
문서번호  
작성일자  
수정일자

2021-12-22

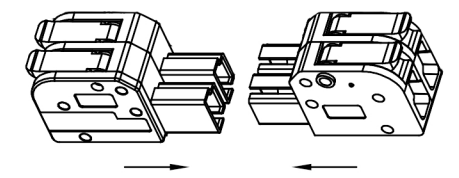
버전  
A0  
재료



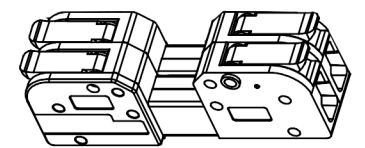
옆면으로 조립 확장 가능



모델명	DC-2-2
제품명	전선커넥터
전선탈피	12mm / 0.39in
온도범위	-20°C -- 105°C
홀 위치	X+N 위치 (간격5,5)
제품 소재	난연성 나일론,PC
접속단자	황동
체결부	스테인리스 스틸



동일한 홀을 통한 결합 및 분리



심사:

심의:

작성: